



P2 PARENTS' BRIEFING 2024



Gracious School , Life-long Learners

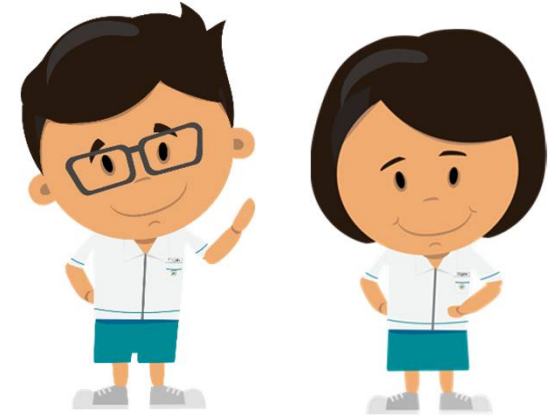
Primary 2 Form Teachers

Class	Year Head: Mdm Marhamah Asst Year Head: Mdm Shakilah
2P1	Mdm Siti Nafisa/ Mdm Jumidah
2P2	Mdm Audrey Yow/ Mdm Sheika
2P3	Mrs Sandra Ong/ Mdm Zehan
2P4	Mr Clement Kang/ Ms Lee Zhibin
2P5	Mdm Leanne Seng/ Mdm Nadhirah
2P6	Mdm Farhana/ Mdm Huang Linlin



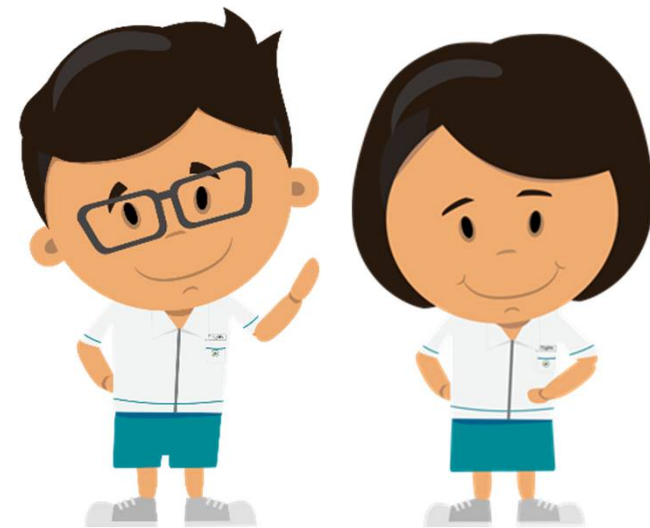
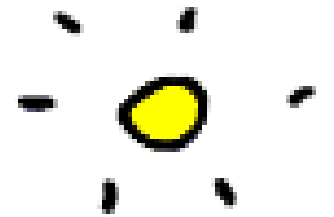
Programme Outline (Part 1)

- **Principal's Address**
- **Assessment Matters**
- **Learning Disposition**
- **Level Promotion**
- **Cyberwellness**
- **Other Matters**
- **P2 Level Events and Programmes**



Programme Outline(Part 2)

- Curriculum Matters (EL, MA & MT)
- Safety Matters
- Positive Classroom
- Home-School Partnership
- Time with FTs



Principal's Address



Gracious School , Life-long Learners

Assessment Matter



Gracious School , Life-long Learners

Formative Assessment (FA)

With the removal of weighted assessments in the lower primary levels, we will use non-weighted assessments to support students' learning, inform their learning progress and address learning gaps.

- Learning Outcomes(LOs) are subject-specific and aligned to the subject syllabus.
- This aims to help parents focus on their child's learning progress in each subject in relation to the intended LOs.
- 4-level Qualitative Descriptors: Beginning; Developing; Competent; Accomplished.



How can I be kept updated of my child's learning progress in school?

Parents can draw different sources of information on your child's learning progress via:

- Teachers' written feedback provided through classroom assessment practices such as, in-class work, homework, projects and FAs;
- PCTC, Class Dojo
- Holistic Development Profile also known as the 'Progress Report'.



Learning Dispositions



Gracious School , Life-long Learners



Observing students' demonstration of positive learning dispositions in East Spring Primary School

Learning Dispositions

- Learning Dispositions (LDs) are positive behaviours and attitudes towards learning.

Background

- The removal of all weighted assessments will affect the selection of Edusave Academic Awards for lower primary students
- Important to retain such awards, as they celebrate a child's success and learning milestones
- Signals the importance of cultivating the right learning dispositions and values from young



P1, P2, P3 Edusave Merit Award will be awarded based on qualitative judgement of a student's learning dispositions



Edusave Merit Bursary:

- P1 and P2 students who display positive learning dispositions consistently.

Good Progress Award:

- P2 and P3 students who have made significant improvement in learning dispositions.



Gracious School , Life-long Learners

ESPS Learning Disposition

Learning Dispositions	Actions
<ul style="list-style-type: none">▪ Joy of Learning▪ Enthusiasm▪ Diligence▪ Resilience & Grit▪ Open-Mindedness	<ul style="list-style-type: none"><input type="checkbox"/> Showing passion and enjoyment in learning<input type="checkbox"/> Showing great interest in learning new things<input type="checkbox"/> Asking questions to deepen understanding<input type="checkbox"/> Showing curiosity in learning new knowledge<input type="checkbox"/> Focusing energy on accomplishing tasks to the best of his/her ability<input type="checkbox"/> Evaluating work and understanding the importance of accuracy & precision of the tasks<input type="checkbox"/> Staying on task no matter how difficult it is<input type="checkbox"/> Seeking and exploring new ideas and possibilities



Promotion to Primary 3



Gracious School , Life-long Learners

Class Allocation Criteria

In view of inclusivity, all classes are with students of mixed ability. Promotion to Primary 3 will be based on the following criteria:

- Learning Disposition
- Gender
- Race

0



0

What does this mean?

Fazilah Maricar d/o Md Ali M, 2024-01-23T03:46:55.766

Cyber Wellness



Gracious School , Life-long Learners



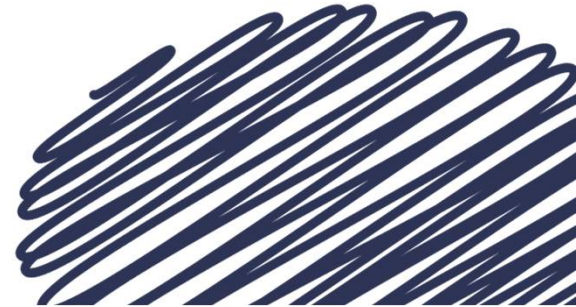
What is Cyber Wellness?

- Cyber Wellness is about our students being able to navigate the cyber space safely.
 - Done through our curriculum which aims to equip students with the knowledge and skills to harness the power of Information and Communication Technology (ICT) for positive purposes, maintain a positive presence in cyberspace and be safe and responsible users of ICT.



What are the school rules on digital device use?

- Use of cellular phones to contact parents/caregivers only after school at the canteen and foyer
- All digital devices should be switched-off during curriculum hours and after school programmes



How can parents help our children develop good digital habits?

- Good digital habits start from the home. Supporting your child early in this process will help him/her greatly as he/she grows older.
- Based on MOH's Guidance on Screen Use for 7-12 year olds, parents are encouraged to:
 - Use parental control settings to monitor and ensure your child access to age-appropriate content;
 - Develop a timetable or screen use agreement to balance screen time and family bonding and;
 - Avoid screen use during mealtimes and one hour before bedtime.
- Co-viewing with your child is also important as it will create more opportunities for conversations.



For more information, you can scan here for MOH's Guidance on Screen Use



P2 Level Programmes



Gracious School , Life-long Learners

Term 1 Calendar

Programme	Level	Dates
Parents' Briefing	P2	26 January
Chinese New Year Celebrations (School ends at 10.30 am.)	P1 – P6	9 February
Total Defence Commemoration	P1 – P6	15 February
Annual Health Check	All Levels	From 29 Feb to 8 Mar



Other Matters



Gracious School , Life-long Learners

Student Details Form (SDF) with Medical Condition declaration.

- MOE requests for an update of your information and your child's/ward's information via the SDF for the purpose of providing educational services to your child/ward in schools.
- At the start of the new academic year, **BOTH** parents/legal guardians are requested to login to the SDF portal via the URL below using your Singpass account.
<https://pg.moe.edu.sg/forms/sdf>
- The SDF portal can be accessed via desktop computers or mobile devices such as laptops and mobile phones. Please complete the submission by 31 Jan 2024. (extended to 4 Feb 2024)

Attendance

- If your child is unwell, please bring him/her to see a doctor to obtain a Medical Certificate.
- Do update the Form Teachers in Class Dojo on his/her absence for the day.
- Only 5 parents letter per semester, reason(s) by parents will only be accepted on a case by case basis**
- Refrain from taking leave (eg: return to hometown, staycation) during term time. Students will not be awarded marks for any assignments if the absence is not valid.



Punctuality



- Our students are expected to be in the **classroom** by **7.30am** for flag-raising ceremony.
- Students will receive a '**Letter of Warning**' or a '**Fair**' **Conduct Grade** should the latecoming persist.



EVERY CHILD MATTERS TO US

Everyone Makes a Difference



Let's work together!



Gracious School , Life-long Learners



Gracious School , Life-long Learners

